



EYE ON THE ICE™

Eye on the Ice is an all-in-one wireless environmental monitoring system. Our wireless approach allows sensors to be conveniently and quickly installed in hard to reach locations without the use of wires allowing for fast and low cost installation. Our user-friendly and customizable software allows for the ice technician to make informed decisions to improve ice conditions and monitor changes from anywhere in the building and even over the Internet!

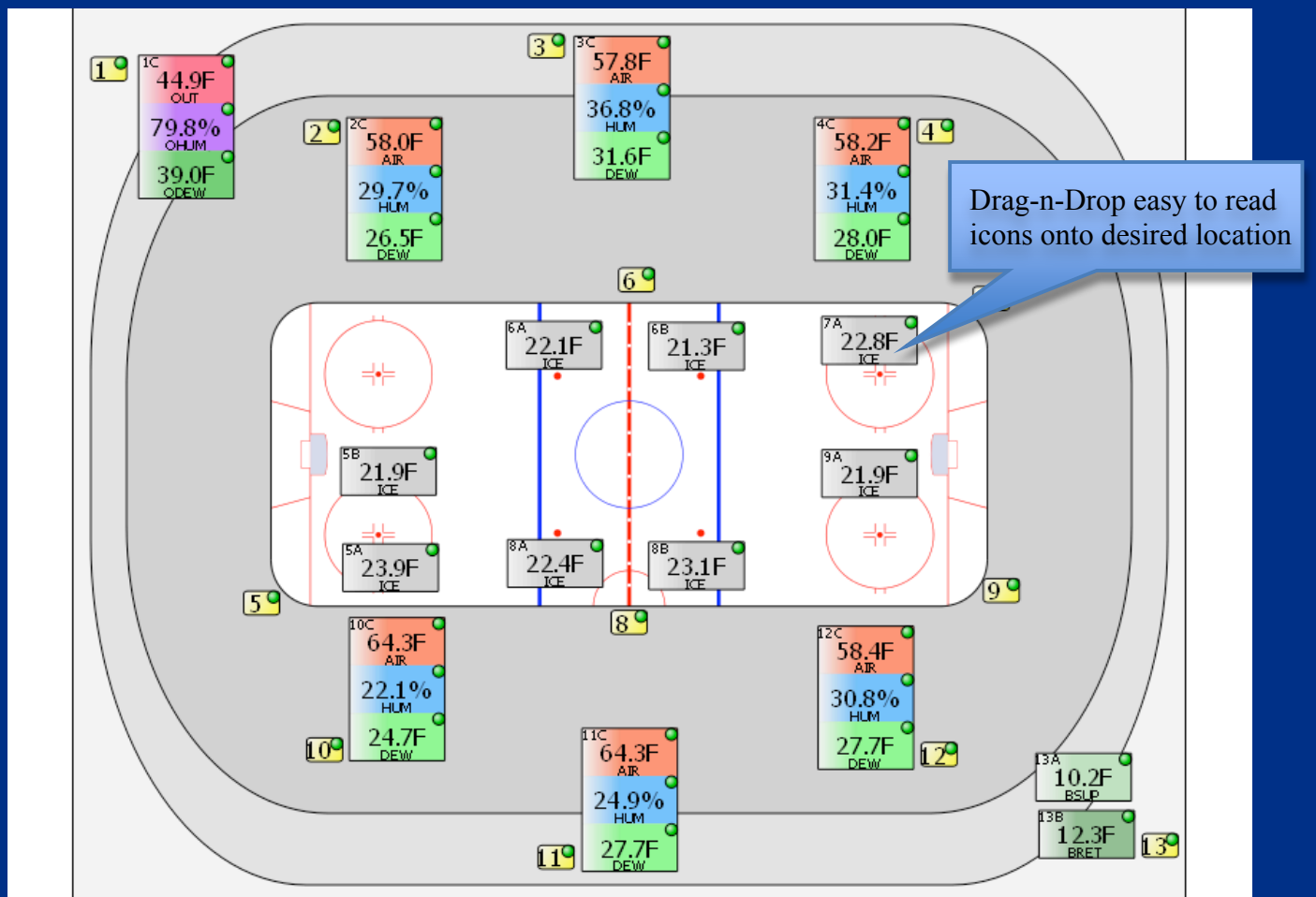
Features & Benefits:

- Real-time view of sensor data including: ice and air temperature, brine supply and return temperature, humidity, and dew point
- Set user-definable alarms and receive warning via email and text message
- Ability to recall measured data values at any point in time
- Interface to website to view data online
- Reduced deployment and maintenance costs
- System will run off one set of AA batteries for up to 5 months consecutively
- An impressive typical outdoor range of 1km and 450m indoors, further expanded with the use of repeaters

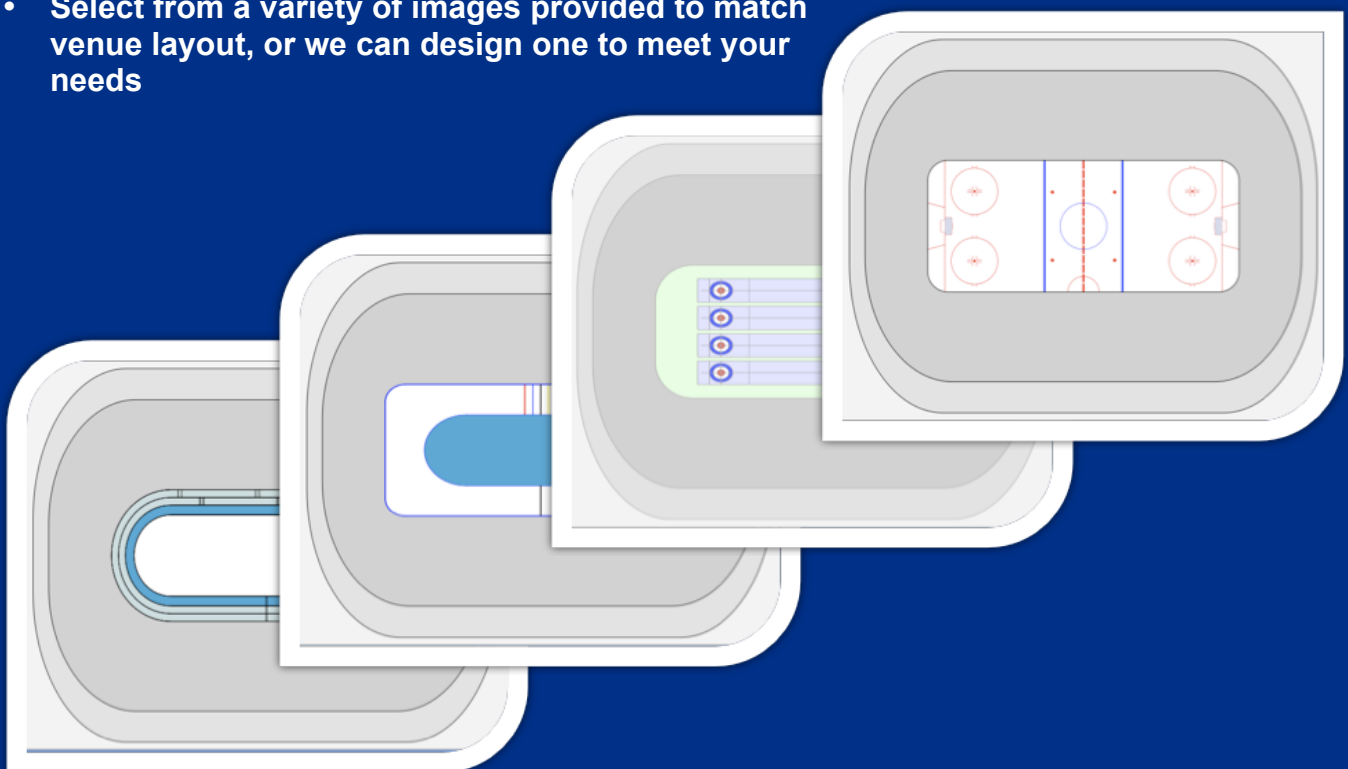


System Applications:

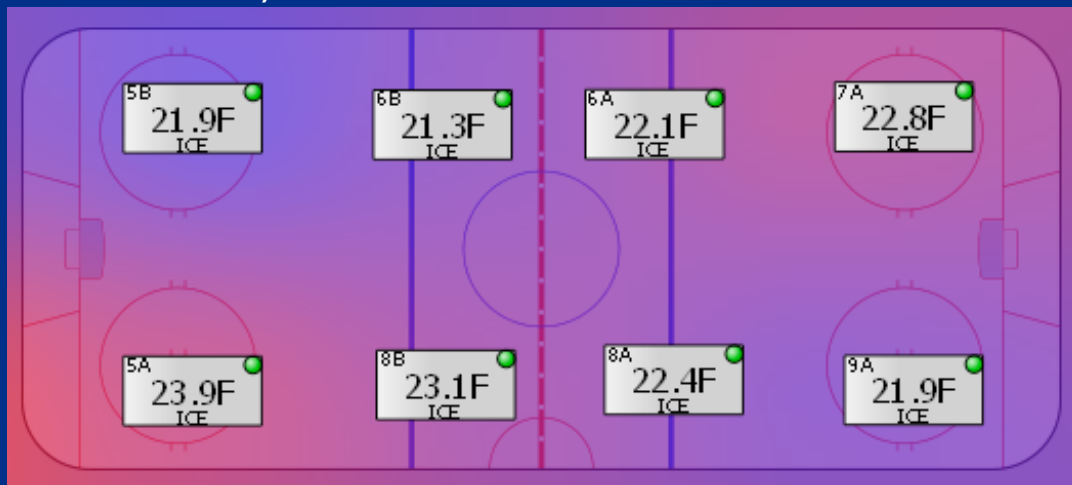
- Ice Sports (Hockey, Curling, Speed Skating, Figure Skating, Bobsleigh)
- Cold Storage
- Food Service Monitoring for Quality Assurance
- Warehouse Monitoring
- Medical Monitoring (Hospitals, Labs, Tissue and Blood Banks)
- Information Technology Areas (Data Centers, Server and Computer Rooms)
- Agricultural (Livestock Housing Facilities, Grain Bins)



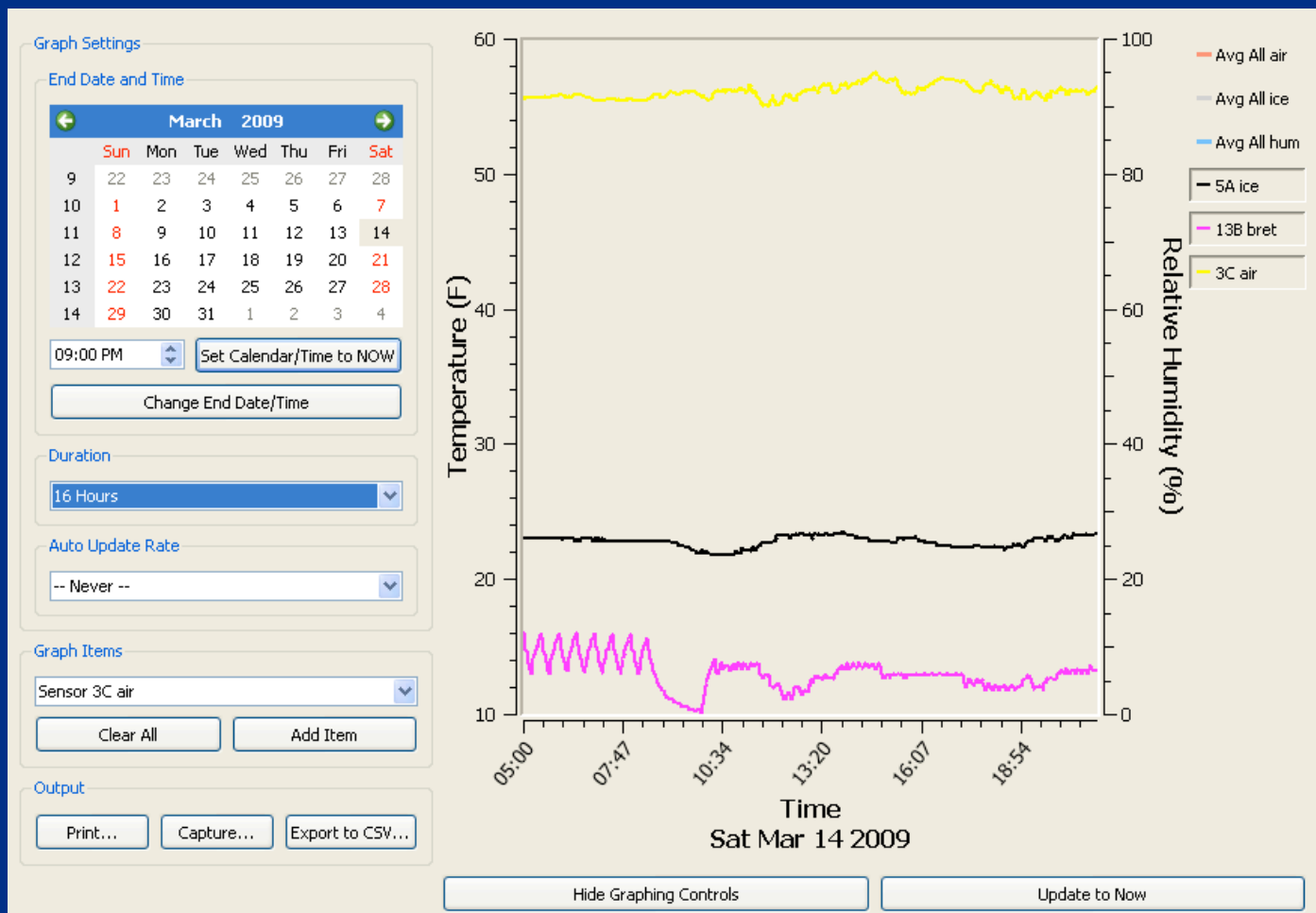
- Rotate the view of the layout 90°, 180°, and 270°
- Select from a variety of images provided to match venue layout, or we can design one to meet your needs



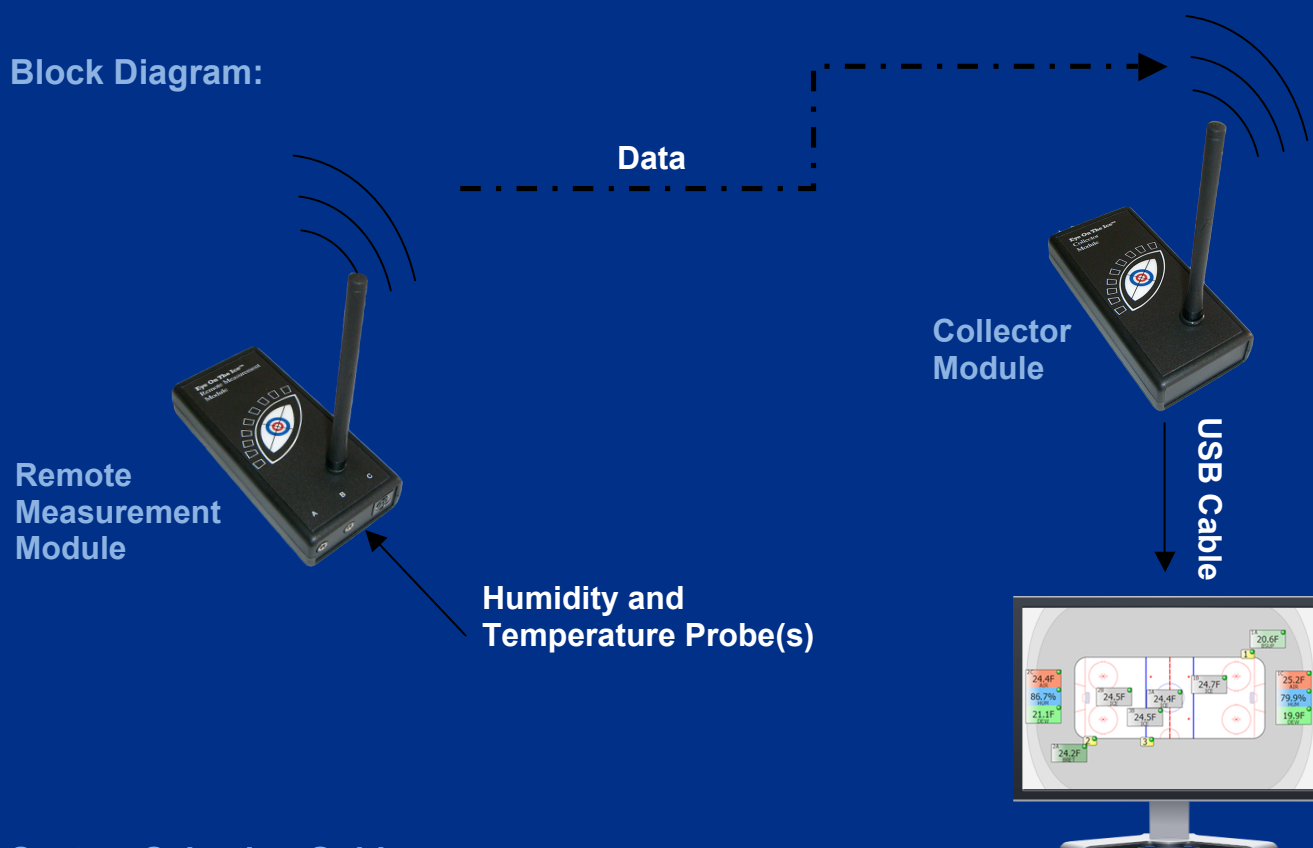
- Ability to create an ice temperature, air temperature, humidity, or dew point contoured image map (red represents areas that are warmer and blue represents areas that are cooler)



- User-definable graphs display data on an XY line plot
- Display instant comparisons between current and past data
- Graph may be printed, saved as an image, or exported to a CSV file
- Ability to click anywhere on the graph to find the precise temperature and humidity ratings and their corresponding time



Block Diagram:



System Selection Guide:

System	Bronze	Silver	Gold	Platinum
Collector Module(s)	1	1	1	2
Remote Measurement Modules	3	6	10	14
Temperature Probes	6	8	12	16
Humidity Probes	2	4	8	12
Ac Adapter(s)	1	2	3	4
Case	No	No	Yes	Yes
Laptop	No	Yes	Yes	Yes
Installation Assistance & Training *	No	No	Yes	Yes

*Installation Assistance & Training includes:

- Assisting with software setup and configuration
- Instructing and supervising the initial hardware installation on-site
- Providing training to the end user (s)

Note: Please contact us for pricing and options in customizing a system for you.

Contact Information:

- Email: sales@eyeontheice.com
- Phone: Hans Wuthrich 204.642.2736 or Rick Forfar 204.479.4177
- Website: www.eyeontheice.com